



City of Westminster



Your guide to council tax

2024/2025



Contents

Council funding	3
Council tax rates	4
How to pay	6
Support and advice	7
Contacting the council	7



From the Leader

Like many councils nationally, Westminster is facing a combination of rising prices, supporting our communities through the cost of living crisis and an increase in households seeking temporary accommodation.

To make sure we address those pressures and continue to deliver excellent services, we have had to put forward a small increase in our council tax. This includes more money to look after vulnerable adults. For Band D households this amounts to an extra 46p per week, with Westminster continuing to have one of the very lowest council tax rates in the country.

We remain focused on helping residents through hard times and cost of living support is at the heart of that with an extra £1m investment into supporting food banks, charities and other local organisations. That takes our total support package so far to £21m of local and central government funding.

Your council tax will play a key role in continuing that support and more, and this booklet sets out how we are doing that.

Cllr Adam Hug

Leader of Westminster City Council

Please contact us on

 **0343 178 2743**

if you would like a copy of this document in Braille, large print, audiotape, or another language.

For the latest news from Westminster City Council, visit our website at

www.westminster.gov.uk

Follow us on social media:



@CityWestminster



@WestminsterCityCouncil



For more information, please visit:
westminster.gov.uk/council-tax

About council funding

Our 2024/25 budget has been formed to address financial strains due to rising service costs and a housing crisis.

Local authorities across the country are under significant pressure with the costs of service delivery rising, alongside a cost of living crisis caused by high inflation. Despite being in a better financial position than most, Westminster is not immune to these pressures.

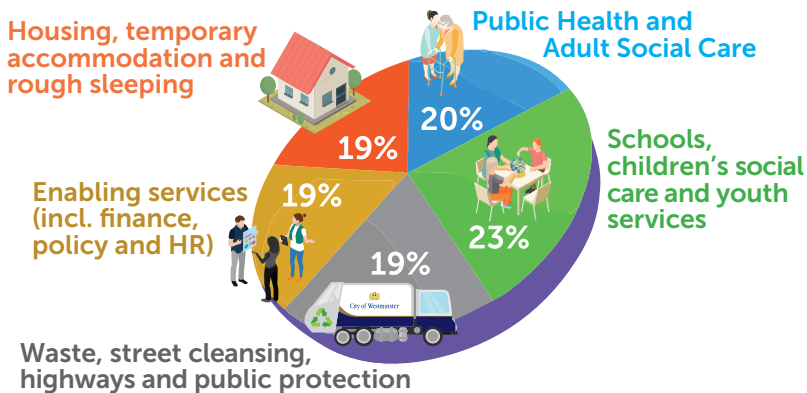
To combat homelessness, an additional £38m is projected to be needed next year in annual funding, despite £178m being

invested in purchasing additional properties for temporary accommodation. The budget therefore proposes a 2.99% increase in our general council tax and a 2% increase for adult social care. This would provide £3.3m in additional funding annually, with a weekly increase of 46p for Band D residents.

To help, we will continue our 100% Council Tax Support scheme. Additionally, investments are planned for cost of living support, ecological initiatives, social care staff wages, mobile CCTV, and waste management.

How we invest in our services

All money raised is invested in council services across Westminster (excluding social housing, which has its own ring-fenced fund, funded by rents from leaseholders and tenants). Here is a breakdown:



The GLA Precept: A proportion of your council tax goes towards funding services provided by the Greater London Authority. This includes London-wide transport, policing and fire services. The budget for this is set each year by the Mayor of London and is automatically included in the amount of council tax you pay.

How much council tax will I pay for 2024/25?

You can find out how much council tax you will pay each year by finding out the valuation band of your property. This is based on how much your property was worth in 1991.

The valuation rates are:

Band	Valuation rates
A	Up to £40,000
B	£40,001 to £52,000
C	£52,001 to £68,000
D	£68,001 to £88,000
E	£88,001 to £120,000
F	£120,001 to £160,000
G	£160,001 to £320,000
H	More than £320,000



The band of your property is also shown on the bill we send to you, just below where it says: 'Council tax demand'.

By looking up your band on the table below, you will see your total council tax payment for the year:

Band	WCC (£)	GLA precept (£)	Total (£)
A	334.51	314.27	648.78
B	390.26	366.64	756.90
C	446.01	419.02	865.03
D	501.76	471.40	973.16
E	613.26	576.16	1,189.42
F	724.76	680.91	1,405.67
G	836.27	785.67	1,621.94
H	1,003.52	942.80	1,946.32

If you live in Queen's Park, an additional precept is applied for the Queen's Park Community Council, created in April 2014:

Band	WCC (£)	GLA precept (£)	QP precept (£)	Total (£)
A	334.51	314.27	34.87	683.65
B	390.26	366.64	40.69	797.59
C	446.01	419.02	46.50	911.53
D	501.76	471.40	52.31	1,025.47
E	613.26	576.16	63.93	1,253.35
F	724.76	680.91	75.56	1,481.23
G	836.27	785.67	87.18	1,709.12
H	1,003.52	942.80	104.62	2,050.94

If you live in Montpelier Square, an additional precept is applied:

Band	WCC (£)	GLA precept (£)	MP precept (£)	Total (£)
A	334.51	314.27	429.04	1,077.82
B	390.26	366.64	500.55	1,257.45
C	446.01	419.02	572.05	1,437.08
D	501.76	471.40	643.56	1,616.72
E	613.26	576.16	786.57	1,975.99
F	724.76	680.91	929.59	2,335.26
G	836.27	785.67	1,072.60	2,694.54
H	1,003.52	942.80	1,287.12	3,233.44



How to pay your council tax


By Direct Debit/ebilling

You can start paying by direct debit and receiving your bill electronically. This is only available if you pay via direct debit.



Go to westminster.gov.uk/council-tax/pay-your-council-tax to find the links to set up your ebilling/Direct Debit payments.

By telephone

Alternatively, you can pay by debit or credit card by using our 24-hour automated payment line:  **020 3772 2602**

You'll need your 9-digit account number which can be found on your Council Tax bill.

In person

You can also pay by cash, cheque or debit card at any bank, or at any post office branch in the Westminster area.

Bank cheque payments are made payable to the City of Westminster, whilst cheque payments made at the Post Office should be made payable to Post Office Ltd.





Support with paying your council tax

We understand many residents might need support with paying their council tax. Some people or properties are eligible for a discount or could be exempt from paying. More information about discounts and exemptions are enclosed.

Remember you can contact the Council Tax Service if you have financial difficulties affecting your ability to pay the council tax. They will make sure you have claimed any relevant

discounts or exemptions. They can offer a longer than usual payment plan.

Having discussed your personal circumstances the Council Tax Service, or an adviser assisting you, may propose a discretionary reduction. This reduction could affect our ability to provide services and/or future council tax levels, so each request for a discretionary reduction is carefully considered.



For more details on the above, visit:

westminster.gov.uk/council-tax/more-information-about-council-tax



Contacting the council

You can contact us if you need information or have any problems with anything to do with council tax.

You can contact us on  **0343 178 2743**

You can email your query to:

 westminster.counciltax1@secure.capita.co.uk

You can reach us by post at:

**Westminster City Council
Council Tax, P.O. Box 165
Erith, DA8 9DW**



Ever thought about becoming a foster carer?

Join one of our Q&A sessions
to hear what it's all about.

Everyone is welcome.

No question is too small.



📞 020 8753 1057

✉ info@fosteringsharedservices.org.uk